

<u>WEEKLY ASSIGNMENTS</u>		
	<u>Sunday, September 27</u>	<u>AM Assembly</u>
<b>Elders</b>	<b>Welcome</b>	Kyle Dusenberry
Mike Dusenberry	<b>Congregational Singing</b>	Tim Maxcey
Butch Lecrone	<b>Opening Prayer</b>	Steve Williams
Tim Maxcey	<b>Lord's Supper</b>	
Jim McLeod	<b>Communion:</b> Brent Bundy, Kyle Dusenberry, Charlie Ellsworth, Fred Ingraham, Clem Santine, Nicholas Santine, Mike Morgan, Gary Kennedy	
Dick Stites	<b>Shepherd's Prayer</b>	Mike Dusenberry
<b>Deacons</b>	<b>Contribution</b>	
Kyle Dusenberry	<b>Message</b>	Bob Young
Kermit Peters	<b>Prayer for Responses/Needs</b>	Mike Dusenberry
Bobby Scott	<b>Nursery Attendant</b>	Paulette Higgins
James Vercelli		
<b>Pulpit Minister</b>		
Bob Young, D.Min		
<b>Youth Minister</b>		
Alan Middleton		
	<u>Sunday, September 27</u>	<u>PM Assembly</u>
<b>Secretary</b>	<b>Song Leader</b>	Kermit Peters
Laura McDonald	<b>Opening Prayer</b>	Charlie Ellsworth
	<b>Closing Prayer</b>	Charles Van Tuyl
	<b>Bus Driver this week</b>	Mike McDonald
	<b>Nursery Attendant</b>	Brenna Dusenberry

**MISSIONS**  
 Shawn & Barbara Gary, Mexico  
 EOSC/Wilburton Bible Chair  
 Prison Ministries: Marvin Dowell  
**Shawn & Barbara Gary's Website**  
<http://leonwork.blogspot.com>

**SEARCH TV**  
 (www.searchtv.com)  
 Ardmore/Ada-KWHB, Ch. 10  
 Sunday - 6:30 AM  
 CHANNEL 12  
 Sunday - 7:30 AM

**SCHEDULE OF SERVICES**  
SUNDAY  
 Bible Classes 9:30 AM  
 Morning Worship 10:30 AM  
 Evening Worship 5:00 PM

WEDNESDAY  
 Bible Classes 7:00 PM

**OFFICE HOURS**  
 MON.DAY - THURSDAY  
 9:00 AM TO 4:00 PM

PO Box 1004 ~ 1700 S. Main Street ~ McAlester, Oklahoma ~ 74502-1004 ~ Phone: 918-423-4743  
 Fax: 918-423-4780 ~ Email:mococ@sbcglobal.net ~ Web Address: mainandoklahomacofc.org

**Main & Oklahoma Church of Christ**  
**PO Box 1004**  
**McAlester, OK 74502-1004**  
 "address return requested"

Non-Profit  
 Organization  
 U.S. Postage  
 PAID  
 McAlester, OK  
 Permit No. 346



# The Light

*"... put on the armor of light." Rom. 13:12*



bits from bob... **Barna Report: How Faith Varies by Church Size**

Many of us in ministry, and others who are close observers of churches, have suspected for a long time that there are significant doctrinal differences between smaller and larger churches. Now the possibility of such doctrinal differences has been studied—and the results were not what I expected! A recent report from Barna shows that congregational size is indeed related to a congregation's religious beliefs, religious behavior and demographic profile. The report shows that there are statistically significant differences between the smallest and largest churches in terms of the doctrinal beliefs of the members and attenders.

The survey results discovered the following.

- On 17 indicators of religious belief and behavior there were statistically significant differences between churches of 100 or fewer adult attenders and churches of 1000 or more adult attenders. The only item in which there was not a distinction was whether the church attender had prayed during the past week.
- On all 9 of the belief statements tested, attenders of large churches were more likely than those in a small or mid-sized congregation to give an orthodox biblical response – e.g., the Bible is totally accurate in all the principles it teaches, Satan is not merely symbolic but exists, Jesus led a sinless life, God is the all-knowing, all-powerful creator of the world who still rules the universe, etc.
- On seven of the eight behavioral measures, attenders of large churches were more likely than those of small churches to be active. (This includes behaviors such as attending church in the past week, reading the Bible in the past week, volunteering at their church in the past week, etc.) The average difference related to these seven behaviors was 17 percentage points.
- There were significant differences on six of the ten demographic attributes examined. Specifically, larger churches were more likely to have college graduates (a 22 percentage point difference between those who attend churches of 100 adults or less and those who attend congregations with 1000 or more adults), affluent attenders, and children under 18 living in their home. Adults attending Protestant mega-churches were also more likely to be registered to vote and to be registered as a Republican (a 16 -point gap compared to adults attending churches of up to 100 adults). Those who attend small churches were more likely to home-school their children.
- Young adults were somewhat more likely to attend mega-churches than to affiliate with a congregation of any other size. In contrast, adults in their sixties or older were less likely to attend a church of 500 or more attenders than to regularly participate in a smaller church.

**Continued on page 2**

- Overall, the profile of demographics, beliefs and religious behaviors was strikingly similar between congregations of 500 to 999 adult attenders and that of congregations drawing 1000 or more adults. Similarly, congregations with fewer than 50 adults were generally similar regarding most indicators to congregations with 50 to 100 attenders.
- The point at which congregational belief profiles were mostly likely to diverge was when churches reached the 200-adult range. Those who attend churches of 1000 or more adults were significantly different from the congregations of those attending churches of as many as 200 adults in relation to six out of the 10 belief statements explored.
- The religious beliefs and behaviors of people who attend house churches, which average about 20 adults in attendance, are more similar to the results for large conventional churches (i.e., more than 500 adults) than they are to the outcomes among those who attend small conventional churches (i.e., less than 50 adults).
- Despite the substantial attention focused on mega-churches, such congregations draw only about 9% of adults who attend church. In contrast, 41% of adults attending church associate with a congregation of 100 or fewer adults. An additional 23% can be found at churches of 101 to 200 adults, 18% associate with bodies of 201 to 499 adults, and 9% can be found in churches of 500 to 999 adults.

[Note: Because the study did not examine when a particular theological perspective was embraced by respondents, the results do not mean that larger churches are more likely to provide members with conservative biblical views.]

## Sunday, September 27, 2009

### **Small Groups Kick-Off at 6:00 p.m.**

The Connectors will meet in Lynn & Cinda Edwards home.

The Encouragers will meet in the church parlor.

The Responders will meet in Mike & Laura McDonald's home.

The Seekers will meet in Bob & Jan Young's home.

## THIS WEEK'S PRAYER REQUESTS

Prayer requests are immediately shared by email and placed on the church website [www.mainandoklahomacofc.org/knee-mail.html]. Requests received since the last bulletin are included here. Military and cancer prayer requests are published monthly.

### September 23

Red Coleman got his teeth pulled yesterday and has his new dentures. He's doing pretty good, but is sore. Remember Red and Anne in prayer.

### September 22

Clem's dad, Andy Santine, passed away early this morning. Rosary is Thursday night, 7 pm at Chaney's Funeral home. Service at 10 am on Friday at St. John's Catholic Church. Please remember Clem, Jayna and the entire family in your prayers.

### Sunday, October 4, 2009

*You are invited to a wedding shower honoring Kevin & Rachel Bundy. It will begin at 3:00 pm in the church parlor. They are registered at Target, Dillard's, and at www.rei.com*

### Saturday, October 10, 2009

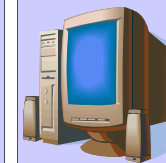
#### **LADIES DAY**

**Theme: Eternal Shopper**  
**Guest Speaker: Phyllis Allen**  
**Registration begins at 8:30 am**

We are collecting uncut coupons for a service project. You may leave those at the information center in the coupon basket. Please sign-up at the information center if you will be able to donate breakfast and lunch items for this event.

### Mid Week Manna Menu

Wednesday, Sept., 23rd - Breakfast  
 Wednesday, Sept., 30th - Chili Dogs



Please sign up at the information center if you would like to assist in the children's Bible class computer lab.

### **2009 STATS**

#### Wednesday, September 16

Bible Study 79

#### Sunday, September 20

Bible Study 87

AM/PM 138/77

Weekly Budget: \$4,502

Contribution: \$3,389

Year to date: \$163,483

Baptisms --  
 Prayers 10  
 Identified 1